



# I-X CENTER

*Imagine*  
THE POSSIBILITIES

CLEVELAND, OH



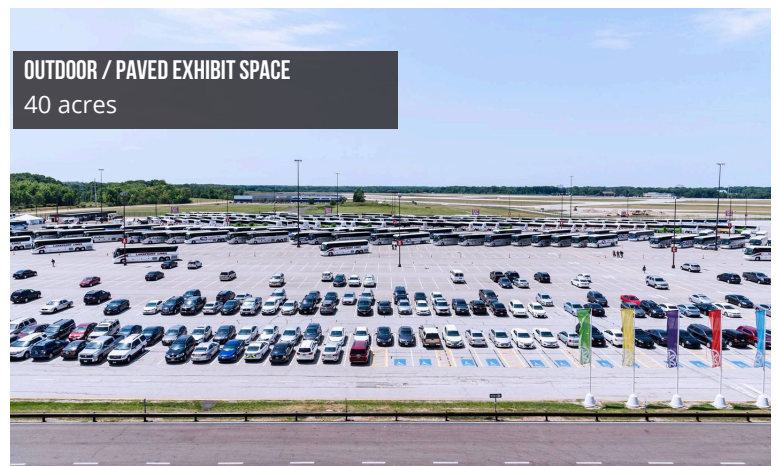
# THE FACILITY

## Who We Are

The I-X Center, one of the Best Convention Centers in America (*The Wall Street Journal*, 2023), is located in Cleveland, OH. The I-X Center has been an economic engine for trade shows, consumer events, meeting and conventions for more than 30 years. Situated adjacent to Cleveland Hopkins International Airport and surrounded by five major interstates, the I-X Center offers more than 550,000 square feet of exhibit space, flexibility to accommodate both large or small groups and of course, Midwest hospitality.

## The space at a glance...

- 515,000 sq. ft. Main Level Exhibit Hall
- 40,000 sq. ft. Concourse Level Exhibit Hall
- 16,800 sq. ft. Grand Ballroom
- 40 acres of Outdoor/Paved Exhibit Space
- 7,200 On Site Parking Spaces
- 26 Meeting Rooms



# AMENITIES

## Accessibility

The I-X Center is located directly adjacent to Cleveland Hopkins International Airport - deplane, catch a ride share, and it's just three minutes to the show floor.

If you're traveling by car, all roads lead to the I-X Center. The facility is situated at the intersection of several interstate highways making any drive to the I-X Center an easy one!

## Lodging

There's a selection of more than 30 hotels featuring over 9,000 rooms located with 5-10 minutes of the I-X Center. Our official hotel partner, The Crowne Plaza, will offer free shuttle rides to the I-X Center on behalf of their guests.

## Parking

You won't have to worry about parking at your next visit to the I-X Center. Visitors also have the convenience of ample, well lit, on-site, gated parking spaces. Daily parking rates are \$10 (prevailing rates will apply). We allow drop offs as well and Uber, Lyft and taxi services.

## Food & Beverage

Concessions to catering, intimate to grand, fine dining to food trucks, the I-X Center has it all. All food activities, indoor and outdoor, at the I-X Center will operate under OVG Hospitality. A food and beverage minimum may be required at I-X Center's discretion.

## Production

The I-X Center's Exclusive Services are as follows; building and event security, medical personnel, cleaning services, telecommunications, drive-in privileges, porter service, coat check, food & beverage, parking, trash hauls, utilities (air, water, drain, electrical) and automated teller machines (ATM).

## Marketing

We understand the importance of driving attendance for your vendors, sponsors and bottom line. Our marketing team is here to help you maximize exposure of your event through our in-house marketing assets, social media and public relations efforts. Let us help you find creative ways to redefine the customer experience.



## EXPOTRON - 365 Days/Year + 24 Hours/Day

Ninety (90) days before your event, it will be featured on the I-X Center's one-of-a-kind video marquee located on State Route 237 and Eastland Road. (One time charge for ad trafficking.)

- Two-sided all LED signage located at the entrance of the I-X Center where the average annual daily traffic is approximately 26,180 vehicles
- Span 47' wide x 40' tall, delivering over 1,800 square feet of messaging potential
- The marquee will run for 24 hours a day / 7 days a week
- Static messages will run in a SOV - eight (8) second loop with other partners
- Minimum ads per day: 1,440 (One .08 second ad per minute x 24 hours)
- Minimum exposure per day: 1 hour/15 minutes

# VENDORS/PARTNERS

## **EXCLUSIVE**

### **Catering & Concessions**

*OVG Hospitality*  
One I-X Center Drive  
Cleveland, OH 44135  
(216) 265-2526

### **Electrical**

*Edlen Electric*  
1 St. Clair Avenue NE  
Cleveland, OH 44114  
(216) 928-1540

### **Technology Services**

*SmartCity Networks*  
5795 W. Badura Ave., Suite 110,  
Las Vegas, NV 89118  
(888) 446-6911

## **PREFERRED**

### **General Service Contractors**

*Fern Expositions & Event Services*  
1593 E. 30th Street  
Cleveland, Ohio 44114  
(216) 771-0940

*Miller's Convention & Expo Services*  
869 West Waterloo Road  
Akron, OH 44314  
(330) 753-9104

### **Lodging**

*Crowne Plaza Cleveland Airport*  
230 Engle Rd  
Middleburg Heights, OH 44130  
(440) 243-4040

### **Advertising/Marketing**

*Avalanche Advertising*  
7437 Detroit Road  
Cleveland, OH 44102  
(216) 816-2260

*Aerial Artistry (Drone Services)*  
[www.aerialartistrydroneservices.com](http://www.aerialartistrydroneservices.com)  
[tedsphone007@gmail.com](mailto:tedsphone007@gmail.com)  
(216) 202-5116

### **Audio and Visual Services**

*Westminster AV*  
[www.westminsterav.com](http://www.westminsterav.com)  
1702 St. Clair ave. NE  
Cleveland, OH 44114



# SPECIFICATIONS

## I-X CENTER | EXHIBIT HALLS, LOBBY & PRE-FUNCTION SPECIFICATIONS

Space	Dimensions	Square Footage	Ceiling Height	10 X 10 Booths
<b>Main Level &amp; Exhibit Halls</b>				
HALL A	300' x 375'	112,500	55' - 77'	550
HALL B	205' x 307'	76,875	55' - 77'	365
HALL C	100' x 325'	32,500	55' - 77'	150
HALL C (1/2)	100' x 165'	16,500	55' - 77'	85
HALL D	206' x 400'	82,400	25'	410
HALL E	215' x 400'	86,000	25'	382
<b>Lower Level Exhibit Hall</b>				
HALL F	200' x 200'	40,000	11'	200
<b>Lobby &amp; Pre-function</b>				
Lobby		12,000	45'	
Concourse Lobby		10,000	11'	
Meeting space pre-function		6,800	10'	

EXHIBIT HALLS

*North Hall encompasses Halls A, B, C; South Hall encompasses Halls D and E*

## Gross Square Feet

- Gross square feet is defined as total display area space including aisles. Aisle space shall be a minimum of ten (10) feet in width with floor plans approved by the Fire Marshal.
- When OVG Hospitality, the I-X Center's exclusive Food & Beverage provider, is permitted by the event to provide an area for food service with the gross exhibit floor area, the space will not be computer as part of the square footage occupied by Licensee.

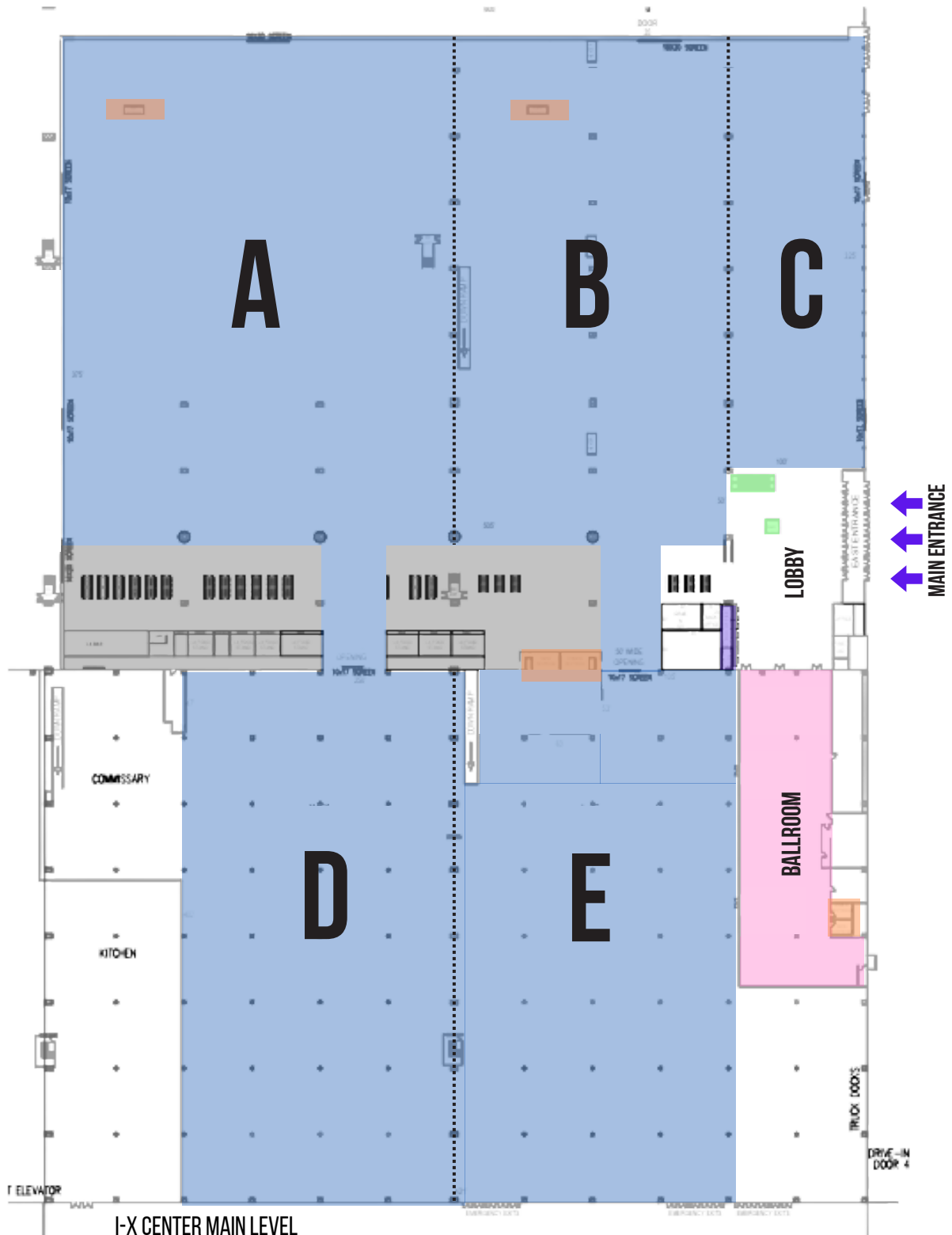
## Rental Rates

- Lobby space used as an exhibit area shall be charged the minimum daily rate or thirty cents (\$.30) per gross square foot, whichever is greater, per day.
- The I-X Center will provide .5 complimentary move-in/out day for each show day; maximum of two; each additional day will be 50% of daily rental.
- Licensee will be charged close-off drape if required space is less than the full gross square footage of the requested hall.

## Services Included

- Space in the pre-function area, to be used for registration purposes only, shall be provided to the Licensee at no additional charge based upon availability and assigned by the I-X Center's event team.
- In-house public address system (in hall only) is complimentary with one (1) standard wired microphone available upon request and within the limits.
- House lighting, heat and/or air conditioning are provided during event hours. An adequate level of lighting and comfort will be maintained during move-in/out hours.
- Free WiFi for light use like reading emails and web browsing provided in food concession area on the Main Level (Connectivity speeds up to 256k up/down).

# FLOOR PLAN



## I-X CENTER MAIN LEVEL

This space includes Halls A-E plus the Grand Ballroom.

### KEY

- ➔ Entrances
- Exhibit Halls
- Grand Ballroom
- Restrooms
- Elevators, Escalator, Stairs
- Concessions



# SPECIFICATIONS

## I-X CENTER | BALLROOM AND MEETING ROOMS

Space	Dimensions	Square Footage	Ceiling Height	Theater	Classroom	Banquet	Sound System
<b>MAIN LEVEL BALLROOM</b>							
Ballroom	237' x 67'	16,000	25'	1,200	550	800	YES
<b>North Meeting Rooms 1 - 10</b>							
N1	75' x 25'	1,875	10'	180	100	100	No
N2	20' x 23'	460	10'	60	40	40	No
N3	17' x 25'	425	9'	35	23	23	No
N4	24' x 42'	1,008	10'	Boardroom - Capacity 24			No
N5	24' x 40'	960	10'	100	66	66	No
N6	23' x 25'	575	10'	62	40	40	No
N7	49' x 84'	4,116	10'	433	220	280	Yes
N8	24' x 59'	1,416	10'	150	90	90	No
N9	24' x 40'	960	10'	100	66	66	No
N10	24' x 35'	840	10'	100	65	65	No
<b>South Meeting Rooms 11 - 26</b>							
S11	40' x 26'	1,040	9'	100	66	66	Yes
S12	25' x 50'	1,250	9'	125	83	83	Yes
S13	50' x 24'	1,250	9'	125	83	83	Yes
S14	25' x 50'	1,250	9'	125	83	83	Yes
S15	49' x 50'	2,450	9'	250	166	166	Yes
S16	49' x 50'	2,450	9'	250	166	166	Yes
S17	49' x 50'	2,450	9'	250	166	166	Yes
S18	49' x 50'	2,450	9'	250	166	166	Yes
S19	25' x 50'	1,250	9'	125	83	83	Yes
S20	25' x 50'	1,250	9'	125	83	83	Yes
S21	25' x 50'	1,250	9'	125	83	83	Yes
S22	25' x 50'	1,250	9'	125	83	83	Yes
S23	25' x 50'	1,250	9'	125	83	83	Yes
S24	25' x 50'	1,250	9'	125	83	83	Yes
S25	25' x 50'	1,250	9'	125	83	83	Yes
S26	25' x 50'	1,250	9'	125	83	83	Yes

BALLROOM & MEETING ROOMS

## Services Included

- One-time standard room set of tables and chairs, within the limits and availability of I-X Center's inventory:
  - Room set options: Classroom, theater, banquet or conference/hollow square/u-shape
  - For banquet style, black or white linens will be provided at no additional charge
  - Room changeover fee applies
- House lighting, heat and/or air conditioning are provided during event hours. An adequate level of lighting and comfort will be maintained during move-in/out hours.
- One topped/skirted table and two chairs registration table.
- Free WiFi for light use like reading emails and web browsing provided in all meeting rooms (Connectivity speeds up to 256k up/down).

# FLOOR PLAN





# KEY CONTACTS

## General Manager

Lisa Vo  
lisa.vo@oakviewgroup.com  
216-265-2630

## Director of Finance

Gemma Choe  
gemma.choe@oakviewgroup.com  
216-265-7110

## Director of Sales and Marketing

Scott McGorty  
scott.mcgorty@oakviewgroup.com  
216-265-2640

## Director of Events

Rob Attewell  
rob.attewell@oakviewgroup.com  
216-265-2590

## Director of Food & Beverage

Al Beltranena  
al.beltranena@oakviewgroup.com  
216-265-2526

## Director of Corporate Partnership

Mike Sedlak  
mike.sedlak@oakviewgroup.com  
216-265-2601

## Sales Manager

Juwanna Williams  
juwanna.williams@oakviewgroup.com  
216-265-7102

## Events Manager

Andi Milligan  
andi.milligan@oakviewgroup.com  
216-265-7103

## About I-X CENTER

The International Exposition (I-X) Center is managed by OVG360 and is one of the nation's premier exhibition facilities located in Cleveland Ohio with more than 500,000 square feet of contiguous exhibit space, 26 flexible breakout rooms, a 16,000 square foot grand ballroom, docks with drive-in capabilities, state-of-the-art technology and 40 acres of outdoor space. Conveniently located adjacent to Cleveland Hopkins International Airport, the I-X Center is just 15 minutes southwest of downtown Cleveland, with nearby hotels and secure on-site parking for more than 7,000 vehicles. The I-X Center has hosted more than 1,500 events attracting 50 million visitors during the past 30 years. For more information, visit [ixcenter.com](http://ixcenter.com). Follow the I-X Center on Facebook, Instagram, and YouTube at @IXCenterCLE.

## About OVG360

OVG360, a division of Oak View Group, is a full-service venue management company that is making a positive disruption in the live entertainment and hospitality industry. OVG360 helps client-partners reimagine the sports, live entertainment, and convention industries for the betterment of the venue, employees, artists, athletes, and surrounding communities.

With a portfolio of more than 200 client-partners spanning arenas, stadiums, convention centers, performing arts centers, cultural institutions, and state fairs around the globe.

*"From a functional, safety and services standpoint, this building is as good as it gets."*  
– Tom Baugh, Chief executive officer, Marketplace Events