

# SPECIFICATIONS FOR I-X CENTER OUTDOOR SITE PLAN

## EAST PARKING

- LOT **A** 165,000 Sq. Ft.  
576 Parking Spaces
- LOT **B** 119,000 Sq. Ft.  
273 Parking Spaces
- LOT **C** 140,000 Sq. Ft.  
477 Parking Spaces
- LOT **E** 27,500 Sq. Ft.  
122 Parking Spaces
- LOT **F** 34,900 Sq. Ft.  
111 Parking Spaces

- EXECUTIVE  16,562 Sq. Ft.  
45 Parking Spaces
- EMPLOYEE  92,726 Sq. Ft.  
272 Parking Spaces

## NORTH PARKING

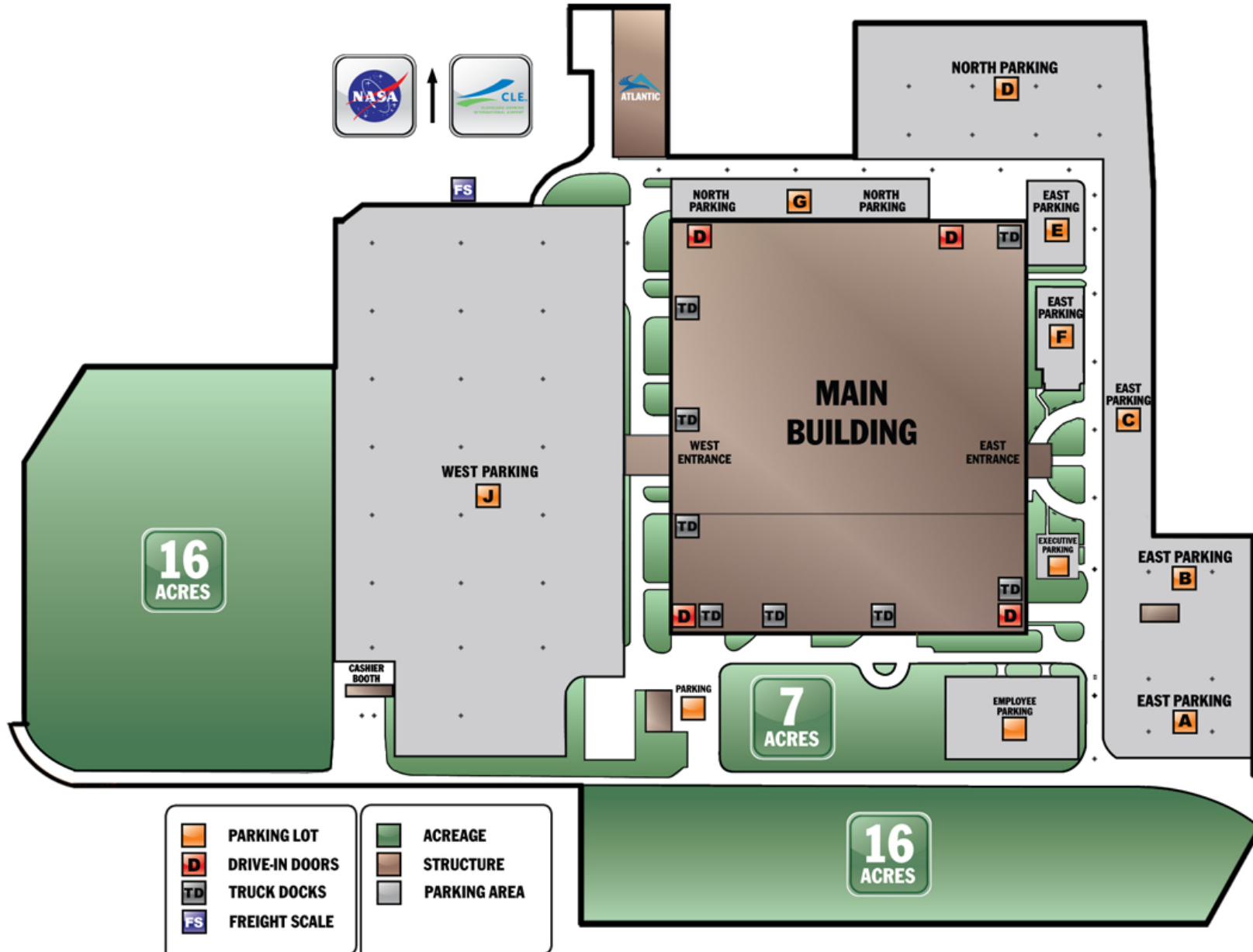
- LOT **D** 349,000 Sq. Ft.  
1215 Parking Spaces
- LOT **G** 85,000 Sq. Ft.  
279 Parking Spaces


## WEST PARKING

- LOT **J** 1,382,308 Sq. Ft.  
3738 Parking Spaces

- GARAGE  92 Parking Spaces

**7,200 TOTAL PARKING SPACES**



	<b>PARKING LOT</b>		<b>ACREAGE</b>
	<b>DRIVE-IN DOORS</b>		<b>STRUCTURE</b>
	<b>TRUCK DOCKS</b>		<b>PARKING AREA</b>
	<b>FREIGHT SCALE</b>		